



# BXUV.G575

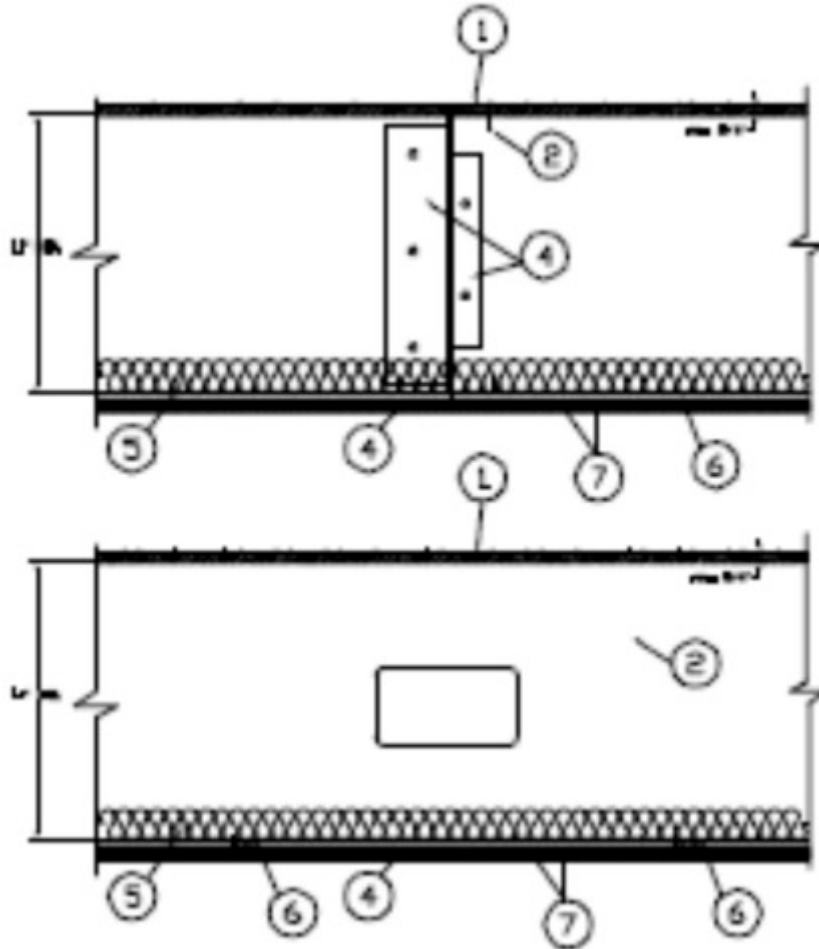
## Fire Resistance Ratings - ANSI/UL 263

[See General Information for Fire Resistance Ratings - ANSI/UL 263](#)

Design No. G575

October 02, 2009

Unrestrained Assembly Rating — 2 Hr



**1. Flooring System - Building Units\*** — Nom 3/4 in. thick. Long dimension of panels to be perpendicular to joists with end joints staggered a min of 4 ft and centered over the joists. Panels secured to steel joists with 1-1/4 in. long self-drilling, self-countersinking, bugle head steel screws spaced a max of 12 in. OC in the field with a screw located 1/2 in. from each edge, and 8 in. OC along the end joints and around the perimeter with a screw located 1/2 in. from each joint and the side edges of the panel.

**DRAGONBOARD USA L L C** — DragonBoard Flooring

**2. Structural Steel Members\*** — The proprietary joists are channel-shaped, min 10 in. deep. Joists are fabricated from min No. 16 MSG galv steel. Joists spaced max 24 in. OC. At joist rim splices bearing on supports, joists rims are connected using an overlapping section of a 12 in. long splice plate (a joist piece), with four 3/4 in. long No. 10 self-drilling steel TEK screws to each rim piece.

**SUPER STUD BUILDING PRODUCTS** — Type 10SSJ16

**3. Joist Bridging - (Not Shown)** — Installed at the center of the joist span immediately after joists are erected and before construction loads are applied. The bridging consists of No. 18 MSG galv steel channels, 2-1/2 in. wide by 22-3/8 in. long with 1/5/8 in. long web extensions at each end for screw-attachment to the bottom flange of the steel joists with a 3/4 in. long No. 10 self-drilling steel TEK screws. Solid bridging consisting of cut-to-length joist sections placed between the outermost joists and between the centermost joists with a max spacing of 8 ft OC.

**4. Angle Clips** — 2-1/16x4-1/8x13/16x9-7/8 in., No 16 ga clips used to fasten joists to joist rim track. 4-1/8 in. side of clip placed against outside web of joists and 2-1/16 in. side placed against joist rim track. Each side secured with three #10-3/4 in. TEK screws. 1-1/2x4x8 in., No. 16 ga clips used to fasten joist bridging with clip located on the web/flange side of the joist. Clip fastened with two #10-3/4 in. TEK screws per leg per clip. 1-1/2x1-1/2x8 in, No 16 ga clips used to fasten joist bridging with clip located on the web/non-flange side of the joist. Clip fastened with two #10-3/4 in. TEK screws per leg per clip.

**5. Batts and Blankets\*** — 3-1/2 in. thick glass fiber batt insulation draped over the resilient channels (Item 5) or suspension system grid (Item 5A). Any glass fiber batt insulation bearing the UL Classification Marking for Surface Burning Characteristics having a flame spread index of 25 or less and a smoke developed index of 50 or less may be used. See **Batts and**

**Blankets** (BKNV) category in the Building Materials Directory for names of manufacturers.

6. **Resilient Channels** — Formed of No. 25 MSG galv steel, 1/2 in. deep, spaced max 12 in. OC, perpendicular to joists. Channel splices located beneath joists and overlapped 4 in.. Channels secured to each joist with one 1/2 in. long Type S-12 low profile steel screw. Two channels, spaced 6 in. OC, oriented opposite each gypsum board end joint. Additional channels shall extend min 6 in. beyond each side edge of board.

7. **Gypsum Board\*** — Nom 5/8 in. thick, 48 in. wide gypsum panels. Base layer installed with long dimension perpendicular to resilient channels, secured with 1 in. long Type S bugle-head screws spaced 12 in. OC, with screws located 6 in. from and on each side of the gypsum panel, in both the field and the perimeter, and 1-1/2 in. from side edges of the panels. Face layer installed with long dimension perpendicular to resilient channels or cross tees with joints offset 24 in. from base layer, secured with 1-5/8 in. long Type S bugle-head screws spaced 8 in., OC, with screws located 4 in. from and on each side of the gypsum panel midspan, in both the field and the perimeter, and 1-1/2 in. from side edges of the panel. Butt joints of face layer panels secured to base layer with 1-1/2 in. long Type G screws spaced 8 in. OC and 1-1/2 in. from side edges of the panels, with butt joints located between resilient channels. Butt joints of face panels staggered a minimum of 12 in. from butt joints of base layer.

**NATIONAL GYPSUM CO** — Type FSW-C

8. **Finishing System - (Not Shown)** — Vinyl, dry or premixed joint compound, applied in two coats to joints and screw-heads. Nom 2 in. wide paper tape embedded in first layer of compound over all joints. As an alternate, nom 3/32 in. thick veneer plaster may be applied to the entire surface of gypsum board.

\*Bearing the UL Classification Mark

## Design/System/Construction/Assembly Usage Disclaimer

- Authorities Having Jurisdiction should be consulted in all cases as to the particular requirements covering the installation and use of UL Listed or Classified products, equipment, system, devices, and materials.
- Authorities Having Jurisdiction should be consulted before construction.
- Fire resistance assemblies and products are developed by the design submitter and have been investigated by UL for compliance with applicable requirements. The published information cannot always address every construction nuance encountered in the field.
- When field issues arise, it is recommended the first contact for assistance be the technical service staff provided by the product manufacturer noted for the design. Users of fire resistance assemblies are advised to consult the general Guide Information for each product category and each group of assemblies. The Guide Information includes specifics concerning alternate materials and alternate methods of construction.
- Only products which bear UL's Mark are considered as Classified, Listed, or Recognized.

Last Updated on 2009-10-02

---

Copyright © 2010 Underwriters Laboratories Inc.®

The appearance of a company's name or product in this database does not in itself assure that products so identified have been manufactured under UL's Follow-Up Service. Only those products bearing the UL Mark should be considered to be Listed and covered under UL's Follow-Up Service. Always look for the Mark on the product.

UL permits the reproduction of the material contained in the Online Certification Directory subject to the following conditions: 1. The Guide Information, Designs and/or Listings (files) must be presented in their entirety and in a non-misleading manner, without any manipulation of the data (or drawings). 2. The statement "Reprinted from the Online Certifications Directory with permission from Underwriters Laboratories Inc." must appear adjacent to the extracted material. In addition, the reprinted material must include a copyright notice in the following format: "Copyright © 2010 Underwriters Laboratories Inc.®"