



DragonBoard® USA
Structural Subfloor Panel

DragonBoard® Product Submittal - 3/4"

Info@dragonboard.com
www.dragonboard.com
732.662.6275

DragonBoard®

Specification Section: 06.16.23 (Subflooring)

UL Rated Structural Subfloor Panel

DragonBoard® Structural Subfloor Panel can be used to -

- replace traditional concrete and lightweight concrete installations where a fire rated assembly is required

DragonBoard® is ideal for use in -

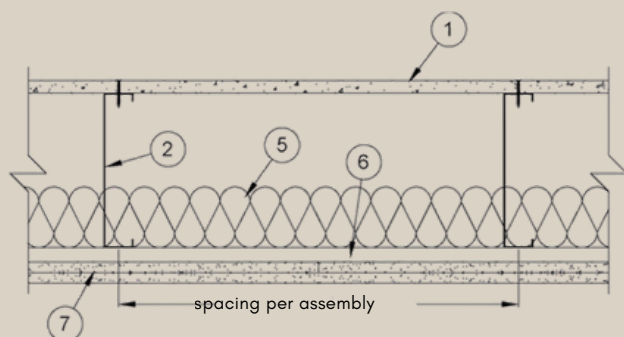
- Mid-Rise, Hotels, Condos, Apartments, Pre-Fab, Mezzanine, Modular, OEM, and Schools.

Codes and Standards

DragonBoard® complies with the applicable provisions of the following -

- International Building Code (IBC) - 2006 - 2024
- Fire Performance - ASTM E84, E136, E119
- UL Fire Rated Assemblies - UL G575, UL U055
 - UL - Certified BZXX.R22189 (US) and CERZC.R22189 (CAN)
- Structural - ASTM E72, E564, E455, C1185, D5628
- Sound - ASTM E90, E492
- Durability & Health - ASTM G21
 - Does not contain Asbestos, Formaldehyde or VOC's

DragonBoard® Exclusive UL Design G575 per ASTM E119 for 2 hour rated floor/ceiling assembly



1. UL Certified DragonBoard® Subfloor
2. Structural Steel Members consisting of cold formed metal joists or trusses
3. Joist Bridging - not shown
4. Clip Angles - not shown
5. Min 3-5/8" Fiberglass Insulation
6. Resilient Channel or Hat Channel
7. Gypsum Board per UL G512

Product Installation -

- Installs directly to steel or wood framing
- Grabber® Fastener CGH8185LG
- Cuts with a circular saw with carbide tip blade

For detailed instructions refer to our website -

<https://dragonboard.com/resources/installation-instructions>

Properties -

- Composition - Magnesium Oxide or MgO
- Panel Size - 4' x 8' x 3/4" nominal (18mm)
- Panel Edge - Shiplap on 8' side
- Panels Per Pallet - 22
- Weight - 4.0 lbs per SQ FT
- Weight Per Panel - Approximately 130 lbs
- Pallet Weight - 2900 lbs

Board Capacity - pounds per square foot (PSF)

Spacing (inches)	Max Deflection	
	L/240	L/360
12" OC	924	609
16" OC	393	257

Table Footnotes -

- Values are based on testing performed NTA, with a board flexural strength of 1901 PSI and modulus of elasticity of 916.56 KSI.
- Ultimate capacity; not reduced by safety factors.
- Testing for strength and stiffness based on ASTM C1185, section 5.
- Values are the lesser of strength capacity or board stiffness that results in the target maximum deflection.

Environmental Stewardship & Sustainability --

DragonBoard® USA supports the programs of the United States Green Building Council (USGBC), and employs a fulltime - LEED Accredited Professional (A.P.) on staff. DragonBoard® qualifies under IEQ Section 4.

As a member of the Magnesium Oxide Building Products Association (MgOBPA), we actively participate in industry efforts to improve MgO product standards, transparency, and education following early-generation MgO failures in the market.