



**DragonBoard® USA**  
Structural Subfloor Panel

# DragonBoard® Product Submittal

Info@dragonboard.com  
www.dragonboard.com  
732.662.6275

## DragonBoard®

### Specification Section: 06.16.23 (Subflooring)

#### UL Rated Structural Subfloor Panel

DragonBoard® Structural Subfloor Panel can be used to -

- replace traditional concrete and lightweight concrete installations where a fire rated assembly is required

DragonBoard® is ideal for use in -

- Mid-Rise, Hotels, Condos, Apartments, Pre-Fab, Mezzanine, Modular, OEM, and Schools.

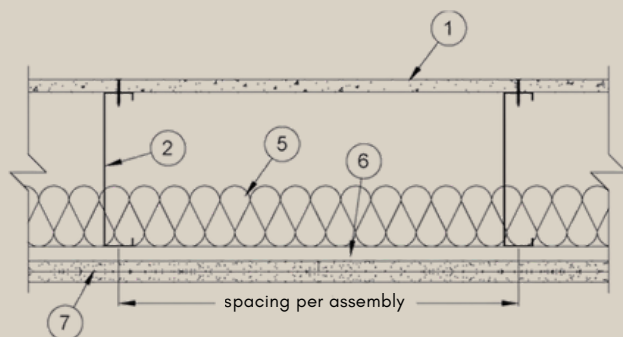
## Codes and Standards

DragonBoard® complies with the applicable provisions of the following -

- International Building Code (IBC) - 2006 - 2024
- Fire testing per ASTM E84, ASTM E136, ASTM E119
- UL Fire Rated Assemblies -
  - UL - Certified BZXX.R22189 US and CERZC.R22189 CAN
- Diaphragm - ASTM E455
- Sound - ASTM E90 and ASTM E492
- Mold - ASTM G21
- Flexural Strength - ASTM C1185

Does not contain Asbestos, Formaldehyde or VOC's

### DragonBoard® Exclusive UL Design G575 per ASTM E119 for 2 hour rated floor/ceiling assembly



1. UL Certified DragonBoard® Subfloor
2. Structural Steel Members consisting of cold formed metal joists or trusses
3. Joist Bridging - not shown
4. Clip Angles - not shown
5. Min 3-5/8" Fiberglass Insulation
6. Resilient Channel or Hat Channel
7. Gypsum Board per UL G512

## Product Installation -

- Installs directly to steel or wood framing
- Grabber® Fastener CGH8185LG
- Cuts with a circular saw with carbide tip blade.

**For detailed instructions refer to  
our website -**

[https://dragonboard.com/resources/  
installation-instructions](https://dragonboard.com/resources/installation-instructions)

## Properties -

- Composition - Magnesium Oxide or MgO
- Panel Size - 4' x 8' x 3/4" nominal (18mm)
- Panel Edge - Ship Lap on 8' side
- Panels Per Pallet - 22
- Weight - 4.0 lbs per SQ FT
- Weight Per Panel - Approximately 130 lbs
- Pallet Weight - 2900 lbs

| Board Capacity - pounds per square foot (PSF) |                |       |
|---|----------------|-------|
| Spacing (inches)                              | Max Deflection |       |
|   | L/240          | L/360 |
| 12" OC  | 924            | 609   |
| 16" OC  | 393            | 257   |

## Table Footnotes -

- Values are based on testing performed NTA, with a board flexural strength of 1901 PSI and modulus of elasticity of 916.56 KSI.
- Ultimate capacity; not reduced by safety factors.
- Testing for strength and stiffness based on ASTM C1185, section 5.
- Values are the lesser of strength capacity or board stiffness that results in the target maximum deflection.

## Environmental Stewardship -

DragonBoard® USA supports the programs of the United States Green Building Council (USGCB), and employs a fulltime - LEED Accredited Professional (A.P.) on staff. DragonBoard® qualifies under IEQ Section 4.

## Sustainability -

For LEED letters contact Greg Krause or [gkrause@dragonboard.com](mailto:gkrause@dragonboard.com) or visit [DragonBoard-Submittal.pdf](#)  
<https://dragonboard.com/about#Sustainability>