



Product Submittal Sheet

Engineering Services: 732-662-6217
 Technical Support: 732-662-6220
 Sales: 732-662-6275

DragonBoard USA
 2960 Woodbridge Ave Edison, NJ 08837
 dragonboard.com

Product Category:

DRAGONBOARD® MgO Structural SubFlooring

Product Name:

DRAGONBOARD®

Product Description: 3/4" Load-bearing SubFlooring

Website: www.DRAGONBOARD.com

Material and Shape Property Notes:

Composition: Magnesium Sulfate

Thickness: 18MM (3/4"Nominal)

Edges: Shiplap

Dimension: 4'x8'

Pieces/ Unit: 35

Unit Weight: 4400 lbs

Properties:

Weight: 4 pounds per foot

Flame Spread: 0 per ASTM E84

Smoke Development Index: 0 per ASTM E84

Fungus/Mold: Non- Nutrient per ASTM G21

3rd Party Certification: Manufacturing verified & inspected by Underwriters Laboratories

UL designs in Assemblies: G575; UL055; ULC W497
 Class A Fire-Rated ASTM E119 E 136 E 84
 No Asbestos/Formaldehyde/VOCs

Board Capacity in Pounds per square foot (PSF)		
Spacing (inches)	Maximum Deflection	
	L/240	L/360
12	1273	1164
16	716	491
19.2	426	284
24	218	146

Footnotes:

1. Values are based on testing performed by NTA, with a board flexural strength of 1901 PSI and modulus of elasticity of 916.56 KSI
2. Ultimate capacity; not reduced by safety factors
3. Testing for strength and stiffness based on ASTM C1185, section 5
4. Values are the lesser of strength capacity or board stiffness that results in the target maximum deflection.

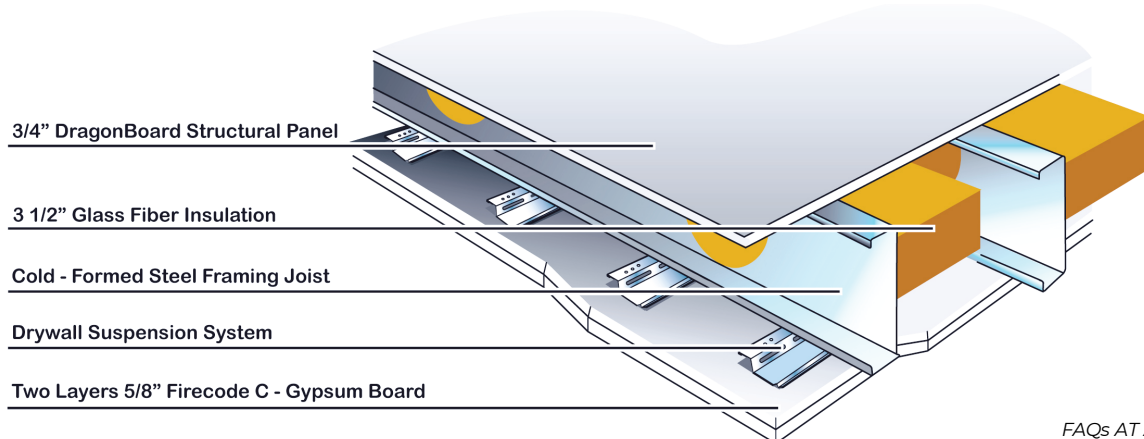
Company-Wide

Environmental Stewardship

DRAGONBOARD USA supports the programs of the United States Green Building Council (USGBC), and employs a full-time LEED® Accredited Professional (A.P.) on staff.

Our primary manufacturing facility has in-house recycling of both manufacturing and office waste and encourages alternative transportation by being located near transit facilities and having bicycle storage and shower facilities for commuters. We have facilities for and encourage rail delivery of steel rather than trucked-in product for reduced transportation emissions and maintain our own fleet of trucks for efficient delivery of our finished products. Incentive programs are in place to encourage employees and customers to conserve energy and natural resources: at home, at work, and in our communities.

2-Hour Fire-rated Assembly



FAQs AT A GLANCE – REV. 12.01.2020

